

Scheda Tecnica

CODICE 61147

NORDIK HVLS SUPER BLADE 400/160" E T L

Ventilatori da soffitto industriali

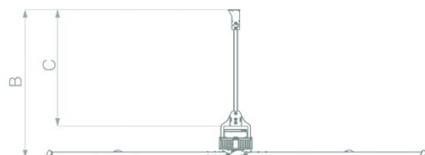


Certificazioni

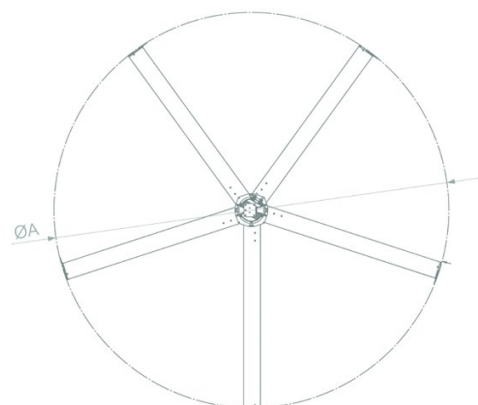
Dati tecnici e prestazionali

Corrente nominale (A)	1,01	Temp. ambiente max funzionamento continuo (°C)	50
Diametro nominale (m)	4	Tensione (V)	200-480
Frequenza (Hz)	50-60	Portata max (m³/h)	330.000
Numero pale	5	Pressione Sonora Lp [dB (A)] in campo libero- 5m	<55
Peso (Kg)	76,5	RPM max	80
Potenza assorbita max (W)	370	RPM min	10

Dimensioni



Diametro A (mm)	Ø4000
Dimensione B (mm)	3310
Dimensione C (mm)	3000



PER INFORMAZIONI / FOR INFORMATION

ITALY

Pre Sales:
prevendita@vortice-italy.com
After Sales:
postvendita@vortice-italy.com

UNITED KINGDOM & REP. OF IRELAND

Sales Dept:
sales@vortice.ltd.uk
Technical Dept:
technical@vortice.ltd.uk

OTHER COUNTRIES

Sales Dept:
export@vortice-italy.com
After Sales:
after-sales@vortice-italy.com

Scheda Tecnica

CODICE 61147

NORDIK HVLS SUPER BLADE 400/160" E T L

Ventilatori da soffitto industriali



Descrizione

Accessori



POT-I
Codice 12832



VORT T
Codice 21137



POT
Codice 12828



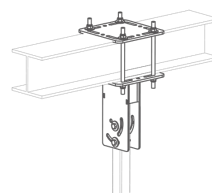
WP
Codice 21197



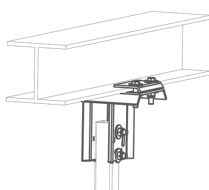
USB-C
Codice 21198



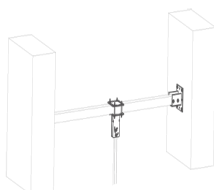
**HVLS
HYPERBLADE-
RD**
Codice 20193



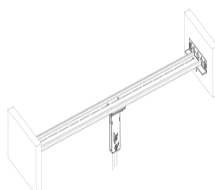
STF1
Codice 20267



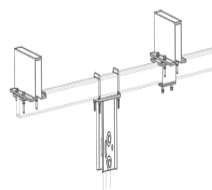
STF2
Codice 20268



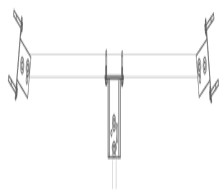
STF3
Codice 20269



STF4
Codice 20270



STF5
Codice 20271



STF6
Codice 20272

PER INFORMAZIONI / FOR INFORMATION

ITALY

Pre Sales:

prevendita@vortice-italy.com

After Sales:

postvendita@vortice-italy.com

UNITED KINGDOM & REP. OF

IRELAND

Sales Dept:

sales@vortice.ltd.uk

Technical Dept:

technical@vortice.ltd.uk

OTHER COUNTRIES

Sales Dept:

export@vortice-italy.com

After Sales:

after-sales@vortice-italy.com