



DS-FS03-01

DETENTORI

Lockshields

Serie Floral old style

Detentori utilizzabili per la regolazione e l'intercettazione dei fluidi negli impianti di riscaldamento.

Tutti i detentori sono dotati di codolo con autotenuta in gomma per facilitare l'installazione.

Lockshields for the regulation and interception of fluids in heating systems. All the lockshields are equipped with a tailpiece with rubber self-sealing to facilitate the installation.

ART. 0398 0399

Detentori attacco per tubo rame e multistrato
Lockshields, connection for copper and multilayer tubes

ART. 0396 0397

Detentori attacco per tubo ferro
Lockshields, iron tube connection



Detentori a squadra
Angled lockshields

Detentori via dritta
Straight lockshields



PRESTAZIONI

Fluidi d'impiego	Acqua, soluzioni glicolate
Percentuale di glicole max	30%
Max pressione d'esercizio	10 bar
Max Temp. d'esercizio	100°C

PERFORMANCE

Employed fluids	Water, antifreeze solutions
Max. percentage of glycol	30%
Max working pressure	10 bar
Max working temperature	100°C

MATERIALI E CARATTERISTICHE TECNICHE

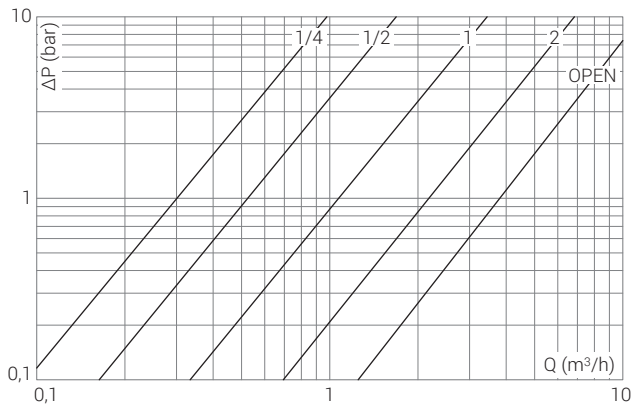
Corpo	
Calotta	Ottone stampato: CW617N UNI EN 12165
Cappuccio detentore	
Componenti interni	Ottone trafilato: CW614N UNI EN 12164
Elementi di tenuta	Gomma EPDM PEROX

MATERIALS AND TECHNICAL FEATURES

Body	
Nut	Pressed brass: CW617N UNI EN 12165
Lockshield cap	
Inside components	Extruded brass: CW614N UNI EN 12164
Seal elements	EPDM PEROX rubber

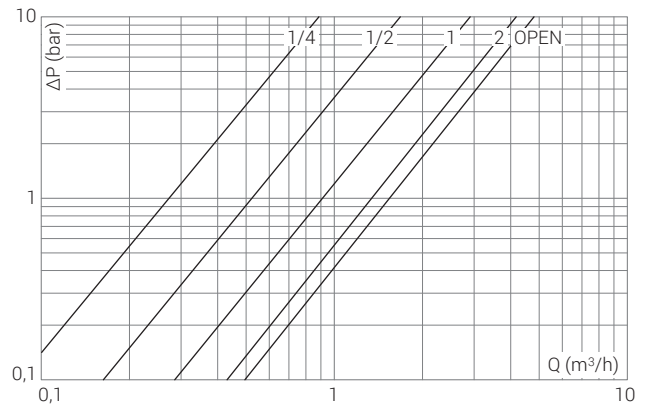
Diagrammi Diagrams

0398 0396 Detentori a squadra
Angled lockshields



POS	1/4	1/2	1	2	OPEN
Kv	0,3	0,52	1,07	2,20	3,89

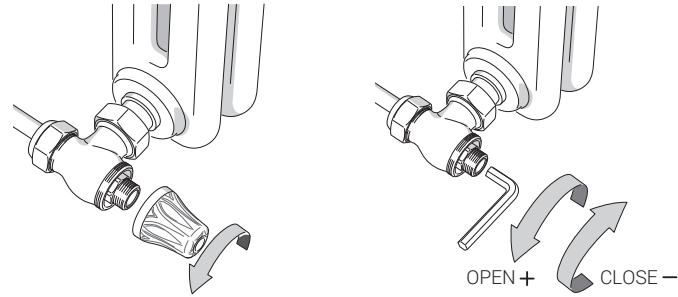
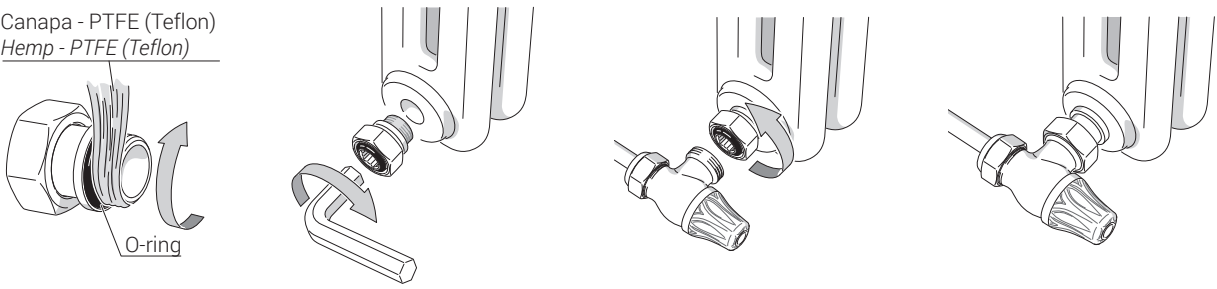
0399 0397 Detentori via diritta
Straight lockshields



POS	1/4	1/2	1	2	OPEN
Kv	0,27	0,53	0,93	1,43	1,56

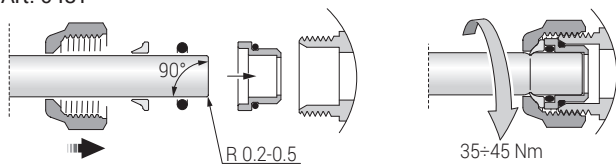
Istruzioni Instructions

Canapa - PTFE (Teflon)
Hemp - PTFE (Teflon)

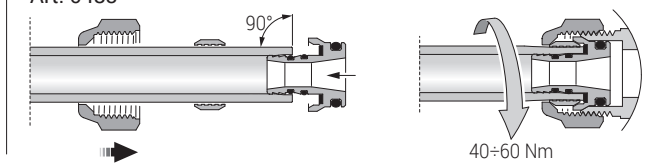


Installazione raccordi Connection installation

Art. 0481

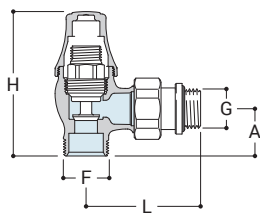


Art. 0483



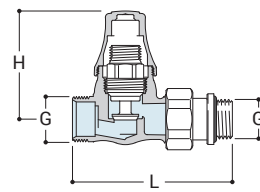
Disegni Drawings

0398



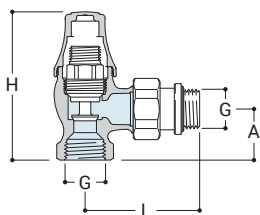
G	F	H	A	L
1/2"	24x19	77	25	61

0399



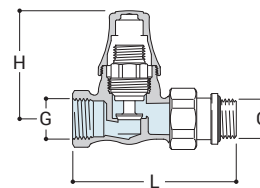
G	F	H	L
1/2"	24x19	58	85

0396



G	H	A	L
1/2"	79	27	61

0397



G	H	L
1/2"	58	87



0481

Raccordo per tubo rame a tenuta O-Ring.
Copper tube connection with O-ring seal.



0483

Raccordo per tubo multistrato.
Multilayer tube connection.



0301

Adattatore 1/2" F x 24/19 F
Adaptor 1/2" F x 24/19 F.



0027

Prolunga per valvole (30 mm).
Extension for radiator valves (30 mm)



0030

Eccentrico per radiatori.
Cam for radiators.



0402

Codolo telescopico
Telescopic tailpiece



0031

Raccordo 1/2" con tubo saldato ø 15 mm.
1/2" connection with welded pipe ø 15 mm.



0490

Rosetta
Wall plate



0497

Kit copritubo tondo floreale (2 pezzi).
Round floral pipe cover set (2 pcs).



A497

Kit di collegamento tondo floreale (2 pezzi), ø 15 mm, lunghezza 150 mm x 1/2".
Round floral connection set (2 pcs), ø 15 mm, length 150 mm x 1/2"



0322

Tappo per radiatore.
Radiator cap.



0327

Valvolina sfogo aria manuale in ottone.
Brass manual air-vent valve.