



DS-OS03-01

# DETENTORI

*Lockshields*

## Serie Old style

Detentori utilizzabili per la regolazione e l'intercettazione dei fluidi negli impianti di riscaldamento.

Tutti i detentori sono dotati di codolo con autotenuta in gomma per facilitare l'installazione.

*Lockshields for the regulation and interception of fluids in heating systems. All the lockshields are equipped with a tailpiece with rubber self-sealing to facilitate the installation.*

ART. 0343 0344

Detentori attacco per tubo rame e multistrato  
*Lockshields, connection for copper and multilayer tubes*

ART. 0341 0342

Detentori attacco per tubo ferro  
*Lockshields, iron tube connection*



Detentori a squadra  
*Angled lockshields*

Detentori via diretta  
*Straight lockshields*



**PRESTAZIONI**

Fluidi d'impiego	Acqua, soluzioni glicolate
Percentuale di glicole max	30%
Max pressione d'esercizio	10 bar
Max Temp. d'esercizio	100°C

**PERFORMANCE**

Employed fluids	Water, antifreeze solutions
Max. percentage of glycol	30%
Max working pressure	10 bar
Max working temperature	100°C

**MATERIALI E CARATTERISTICHE TECNICHE**

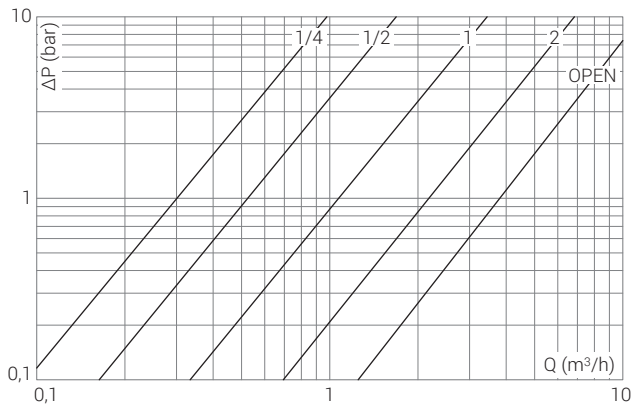
Corpo	
Calotta	Ottone stampato: CW617N UNI EN 12165
Cappuccio detentore	
Componenti interni	Ottone trafilato: CW614N UNI EN 12164
Elementi di tenuta	Gomma EPDM PEROX

**MATERIALS AND TECHNICAL FEATURES**

Body	
Nut	Pressed brass: CW617N UNI EN 12165
Lockshield cap	
Inside components	Extruded brass: CW614N UNI EN 12164
Seal elements	EPDM PEROX rubber

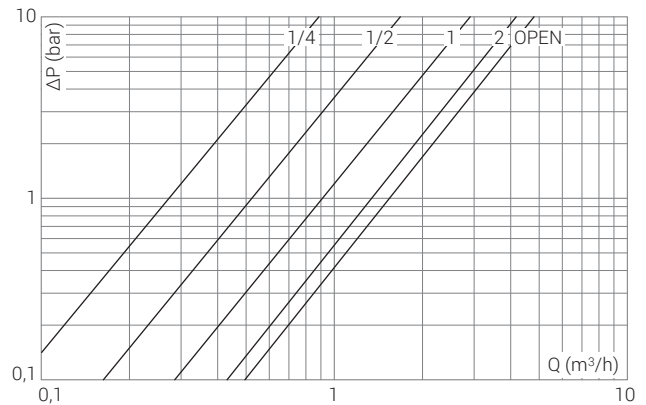
**Diagrammi Diagrams**

**0343 0341** Detentori a squadra  
*Angled lockshields*



POS	1/4	1/2	1	2	OPEN
Kv	0,3	0,52	1,07	2,20	3,89

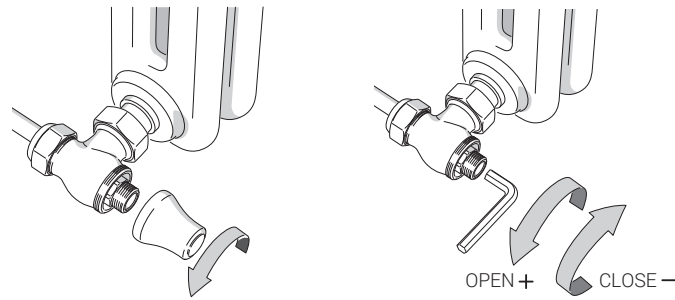
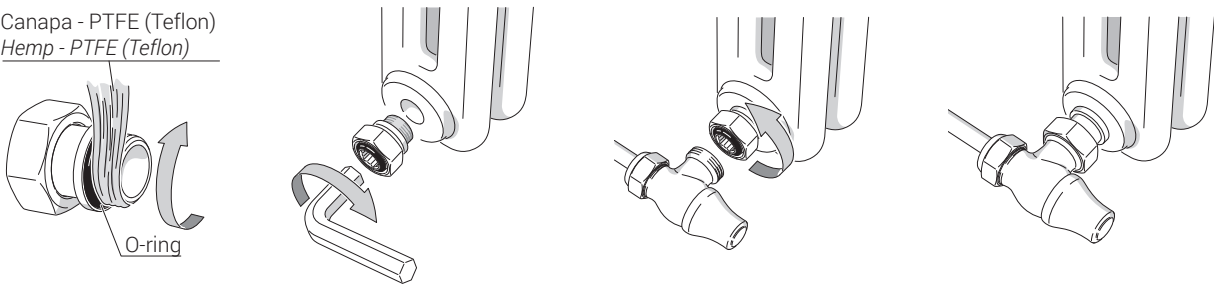
**0344 0342** Detentori via diritta  
*Straight lockshields*



POS	1/4	1/2	1	2	OPEN
Kv	0,27	0,53	0,93	1,43	1,56

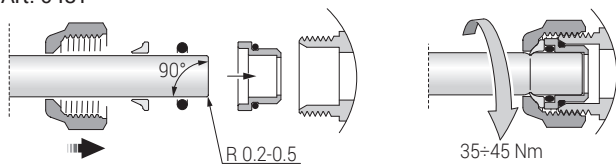
**Istruzioni Instructions**

Canapa - PTFE (Teflon)  
Hemp - PTFE (Teflon)

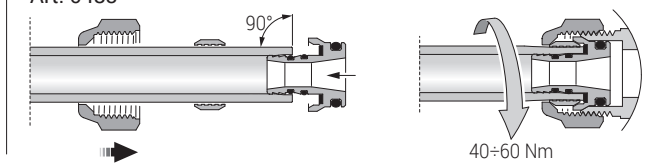


**Installazione raccordi Connection installation**

Art. 0481

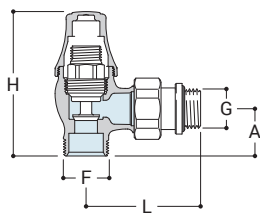


Art. 0483



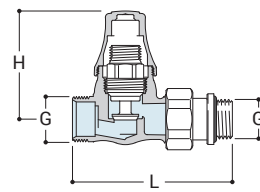
**Disegni Drawings**

**0343**



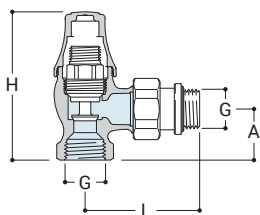
<b>G</b>	<b>F</b>	<b>H</b>	<b>A</b>	<b>L</b>
1/2"	24x19	77	25	61

**0344**



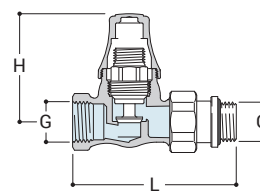
<b>G</b>	<b>F</b>	<b>H</b>	<b>L</b>
1/2"	24x19	58	85

**0341**



<b>G</b>	<b>H</b>	<b>A</b>	<b>L</b>
1/2"	79	27	61

**0342**



<b>G</b>	<b>H</b>	<b>L</b>
1/2"	58	87



**0481**

Raccordo per tubo rame a tenuta O-Ring.  
*Copper tube connection with O-ring seal.*



**0483**

Raccordo per tubo multistrato.  
*Multilayer tube connection.*



**0301**

Adattatore 1/2" F x 24/19 F.  
*Adaptor 1/2" F x 24/19 F.*



**0027**

Prolunga per valvole (30 mm).  
*Extension for radiator valves (30 mm)*



**0030**

Eccentrico per radiatori.  
*Cam for radiators.*



**0402**

Codolo telescopico  
*Telescopic tailpiece*



**0031**

Raccordo 1/2" con tubo saldato ø 15 mm.  
*1/2" connection with welded pipe ø 15 mm.*



**0490**

Rosetta  
*Wall plate*



**0491**

Kit copritubo tondo (2 pezzi).  
*Round pipe cover set (2 pcs).*



**A491**

Kit di collegamento con rosoni tondi (2 pezzi), ø 15 mm, lunghezza 150 mm x 1/2".  
*Round connection set (2 pcs), ø 15 mm, length 150 mm x 1/2"*



**0322**

Tappo per radiatore.  
*Radiator cap.*



**0327**

Valvolina sfogo aria manuale in ottone.  
*Brass manual air-vent valve.*