



DS-FS02-01

# VALVOLE MANUALI

*Manual radiator valves*

## Serie Floral old style

Valvole manuali utilizzabili per l'intercettazione dei fluidi negli impianti di riscaldamento. Tutte le valvole sono dotate di codolo con autotenuta in gomma per facilitare l'installazione.

*Manual radiator valves for the interception of fluids in heating systems. All the valves are equipped with a tailpiece with rubber self-sealing to facilitate the installation.*

ART. 0339 0340

Valvole manuali attacco per tubo rame e multistrato  
*Manual radiator valves, connection for copper and multilayer tubes*

ART. 0337 0338

Valvole manuali attacco per tubo ferro  
*Manual radiator valves, iron tube connection*



Valvole a squadra  
*Angled radiator valves*

Valvole via dritta  
*Straight radiator valves*



**PRESTAZIONI**

|                            |                            |
|----------------------------|----------------------------|
| Fluidi d'impiego           | Acqua, soluzioni glicolate |
| Percentuale di glicole max | 30%                        |
| Max pressione d'esercizio  | 10 bar                     |
| Max Temp. d'esercizio      | 100°C                      |

**PERFORMANCE**

|                           |                             |
|---------------------------|-----------------------------|
| Employed fluids           | Water, antifreeze solutions |
| Max. percentage of glycol | 30%                         |
| Max working pressure      | 10 bar                      |
| Max working temperature   | 100°C                       |

**MATERIALI E CARATTERISTICHE TECNICHE**

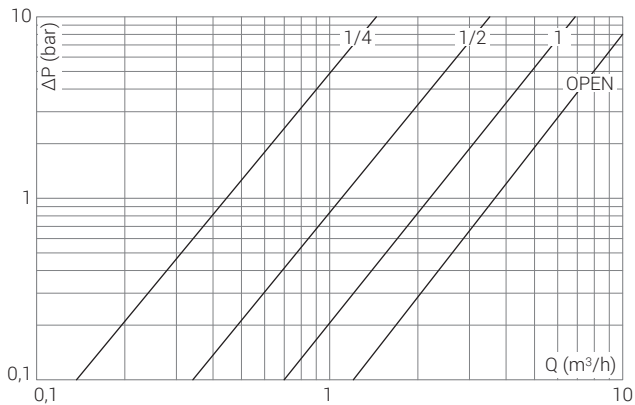
|                    |  |
|--------------------|--|
| Corpo              |  |
| Calotta            | Ottone stampato:<br>CW617N UNI EN 12165  |
| Volantino          |  |
| Componenti interni | Ottone trafilato:<br>CW614N UNI EN 12164 |
| Elementi di tenuta | Gomma EPDM PEROX                         |

**MATERIALS AND TECHNICAL FEATURES**

|                   |  |
|-------------------|--|
| Body              |  |
| Nut               | Pressed brass:<br>CW617N UNI EN 12165  |
| Handwheel         |  |
| Inside components | Extruded brass:<br>CW614N UNI EN 12164 |
| Seal elements     | EPDM PEROX rubber                      |

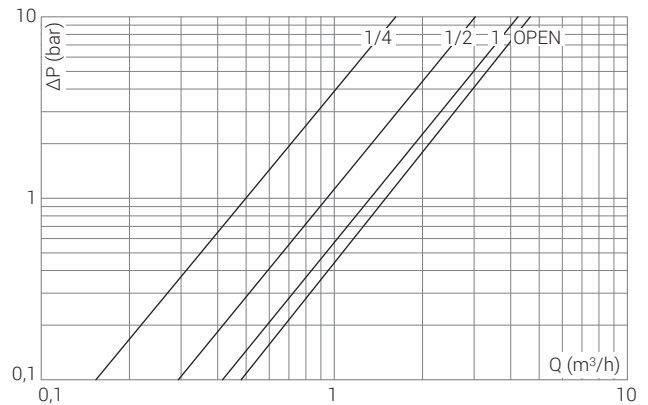
**Diagrammi Diagrams**

**0339 0337** Valvole a squadra  
Angled radiator valves



| POS | 1/4  | 1/2  | 1    | OPEN |
|-----|------|------|------|------|
| Kv  | 0,46 | 1,13 | 2,21 | 3,83 |

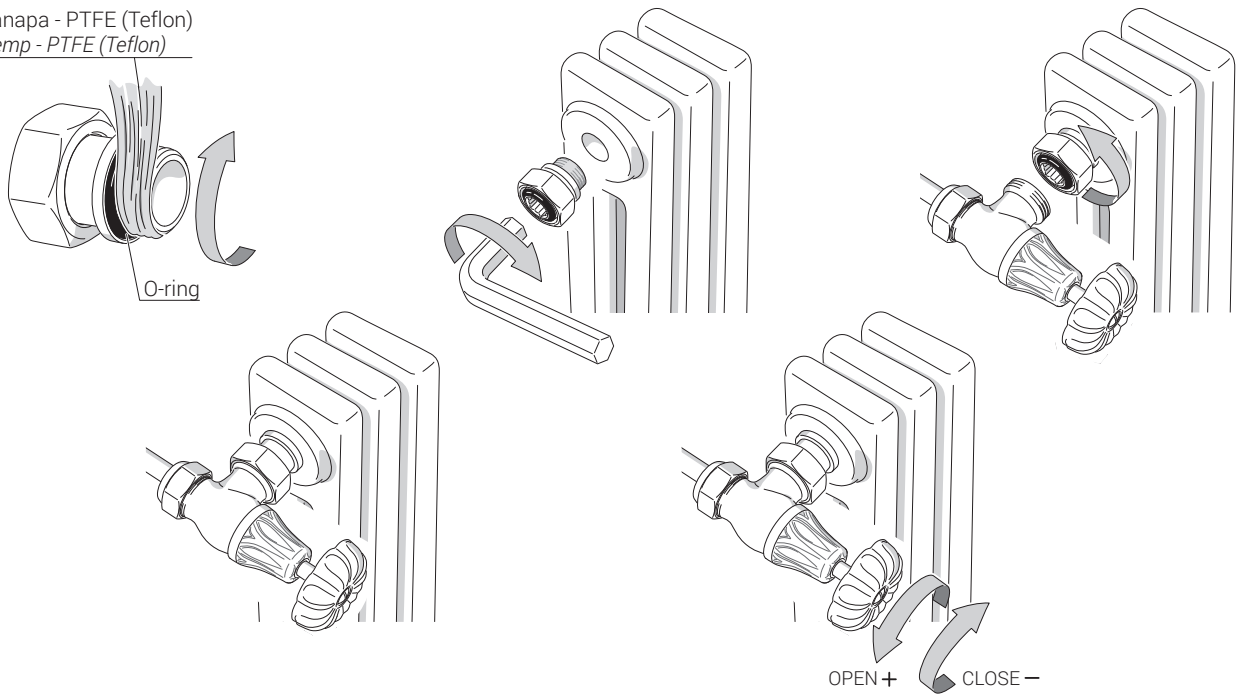
**0340 0338** Valvole via diretta  
Straight radiator valves



| POS | 1/4  | 1/2  | 1    | OPEN |
|-----|------|------|------|------|
| Kv  | 0,50 | 0,92 | 1,41 | 1,54 |

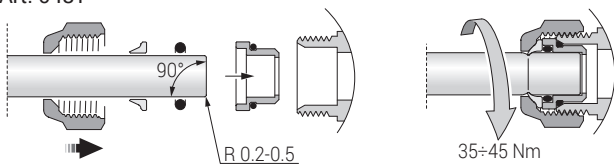
**Istruzioni Instructions**

Canapa - PTFE (Teflon)  
Hemp - PTFE (Teflon)

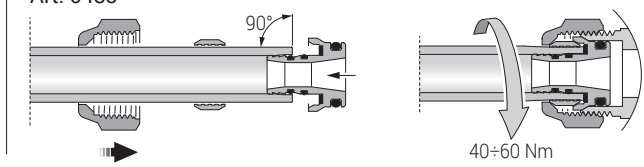


**Installazione raccordi Connection installation**

Art. 0481

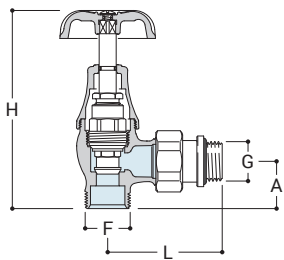


Art. 0483



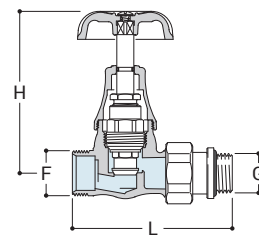
**Disegni Drawings**

**0339**



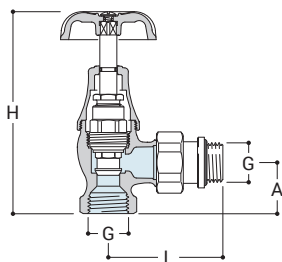
|          |          |          |          |          |
|----------|----------|----------|----------|----------|
| <b>G</b> | <b>F</b> | <b>H</b> | <b>A</b> | <b>L</b> |
| 1/2"     | 24x19    | 105      | 25       | 61       |

**0340**



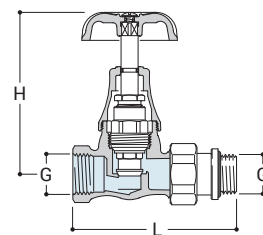
|          |          |          |          |
|----------|----------|----------|----------|
| <b>G</b> | <b>F</b> | <b>H</b> | <b>L</b> |
| 1/2"     | 24x19    | 86       | 85       |

**0337**



|          |          |          |          |
|----------|----------|----------|----------|
| <b>G</b> | <b>H</b> | <b>A</b> | <b>L</b> |
| 1/2"     | 107      | 27       | 61       |

**0338**



|          |          |          |
|----------|----------|----------|
| <b>G</b> | <b>H</b> | <b>L</b> |
| 1/2"     | 86       | 87       |



**0481**

Raccordo per tubo rame a tenuta O-Ring.  
*Copper tube connection with O-ring seal.*



**0483**

Raccordo per tubo multistrato.  
*Multilayer tube connection.*



**0301**

Adattatore 1/2" F x 24/19 F.  
*Adaptor 1/2" F x 24/19 F.*



**0027**

Prolunga per valvole (30 mm).  
*Extension for radiator valves (30 mm)*



**0030**

Eccentrico per radiatori.  
*Cam for radiators.*



**0402**

Codolo telescopico  
*Telescopic tailpiece*



**0031**

Raccordo 1/2" con tubo saldato ø 15 mm.  
*1/2" connection with welded pipe ø 15 mm.*



**0490**

Rosetta  
*Wall plate*



**0497**

Kit copritubo tondo floreale (2 pezzi).  
*Round floral pipe cover set (2 pcs).*



**A497**

Kit di collegamento tondo floreale (2 pezzi), ø 15 mm, lunghezza 150 mm x 1/2".  
*Round floral connection set (2 pcs), ø 15 mm, length 150 mm x 1/2"*



**0322**

Tappo per radiatore.  
*Radiator cap.*



**0327**

Valvolina sfogo aria manuale in ottone.  
*Brass manual air-vent valve.*