



DS-LY02-01

VALVOLA MANUALE E DETENTORE

Manual radiator valve and lockshield

Serie Liberty

Valvola manuale e detentore utilizzabili per l'intercettazione e la regolazione dei fluidi negli impianti di riscaldamento.

Sono entrambi dotati di codolo con autotenuta in gomma per facilitare l'installazione.

Manual valve and lockshield for the adjustment and interception of fluids in heating systems. Both of them are equipped with a tailpiece with rubber self-sealing to facilitate the installation

ART. 0325

Valvola semplice regolazione a squadra, attacco tubo ferro
Angled manual radiator valve, iron tube connection

ART. 0323

Detentore a squadra, attacco tubo ferro
Angled lockshield, iron tube connection



0325



0323



PRESTAZIONI

Fluidi d'impiego	Acqua, soluzioni glicolate
Percentuale di glicole max	30%
Max pressione d'esercizio	10 bar
Max Temp. d'esercizio	100°C

PERFORMANCE

Employed fluids	Water, antifreeze solutions
Max. percentage of glycol	30%
Max working pressure	10 bar
Max working temperature	100°C

MATERIALI E CARATTERISTICHE TECNICHE

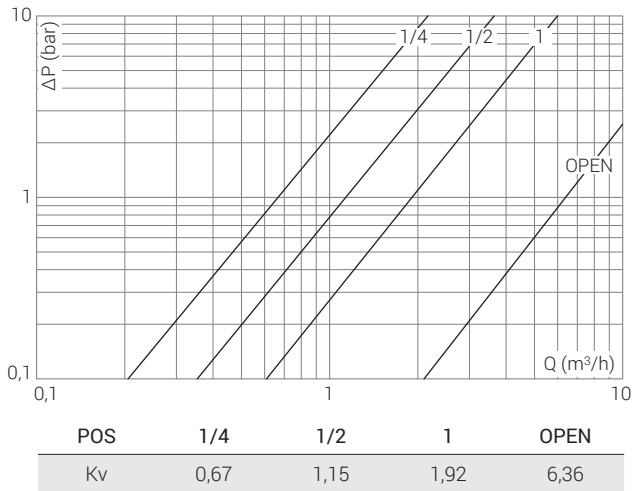
Corpo	
Calotta	Ottone stampato: CW617N UNI EN 12165
Volantino	
Componenti interni	Ottone trafilato: CW614N UNI EN 12164
Cappuccio detentore	CW614N UNI EN 12164
Elementi di tenuta	Gomma EPDM PEROX

MATERIALS AND TECHNICAL FEATURES

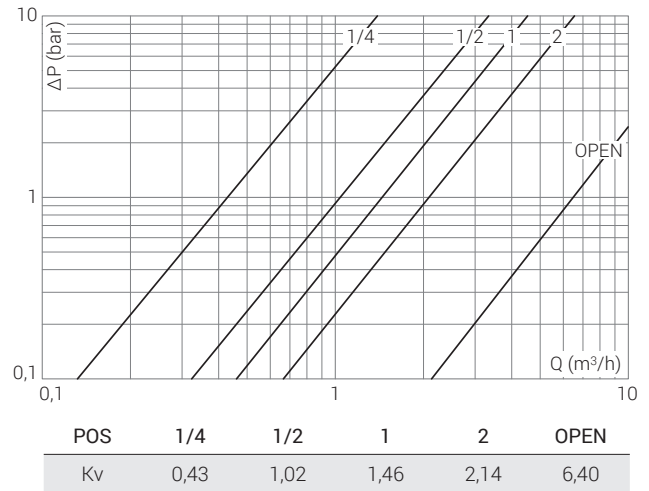
Body	
Nut	Pressed brass: CW617N UNI EN 12165
Handwheel	
Inside components	Extruded brass: CW614N UNI EN 12164
Lockshield cap	CW614N UNI EN 12164
Seal elements	EPDM PEROX rubber

Diagrammi Diagrams

0325 Valvola a squadra
Angled radiator valve

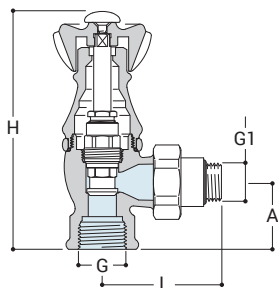


0323 Detentore a squadra
Angled lockshield



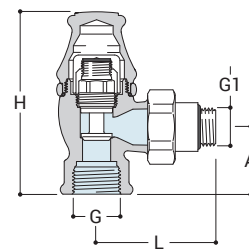
Disegni Drawings

0325



G	G1	H	A	L
3/4"	1/2"	131	37	66

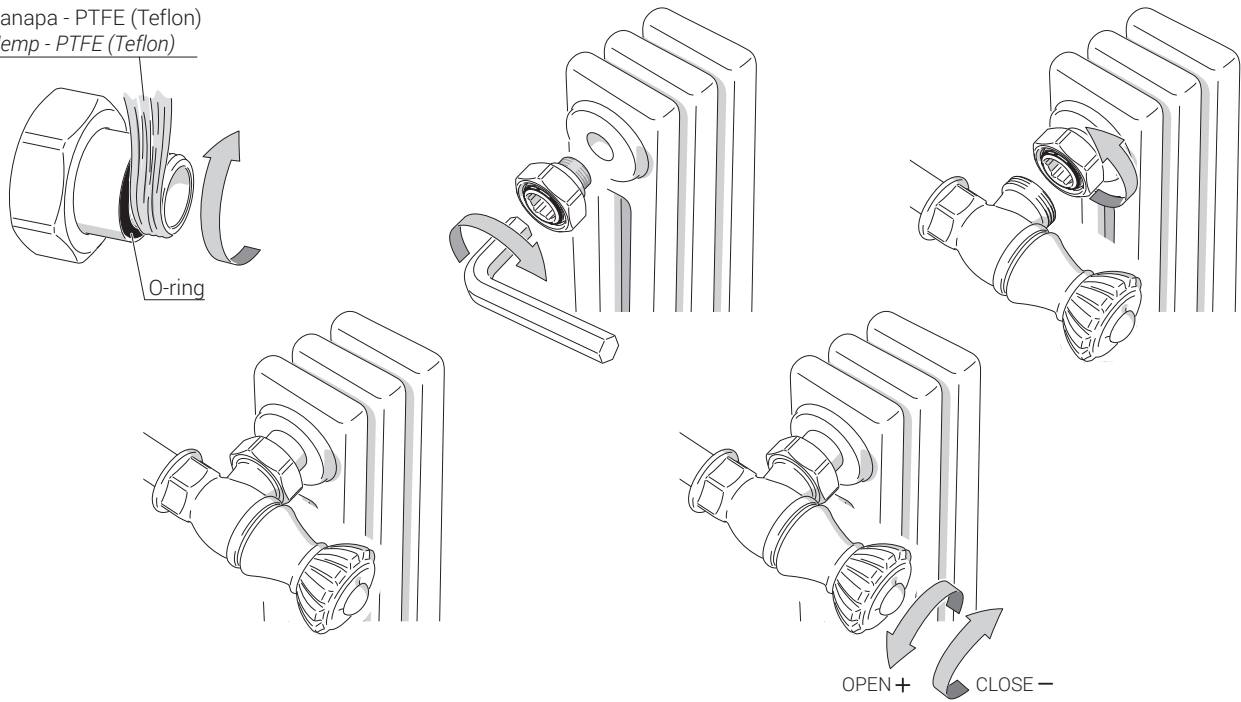
0323



G	G1	H	A	L
3/4"	1/2"	101	37	66

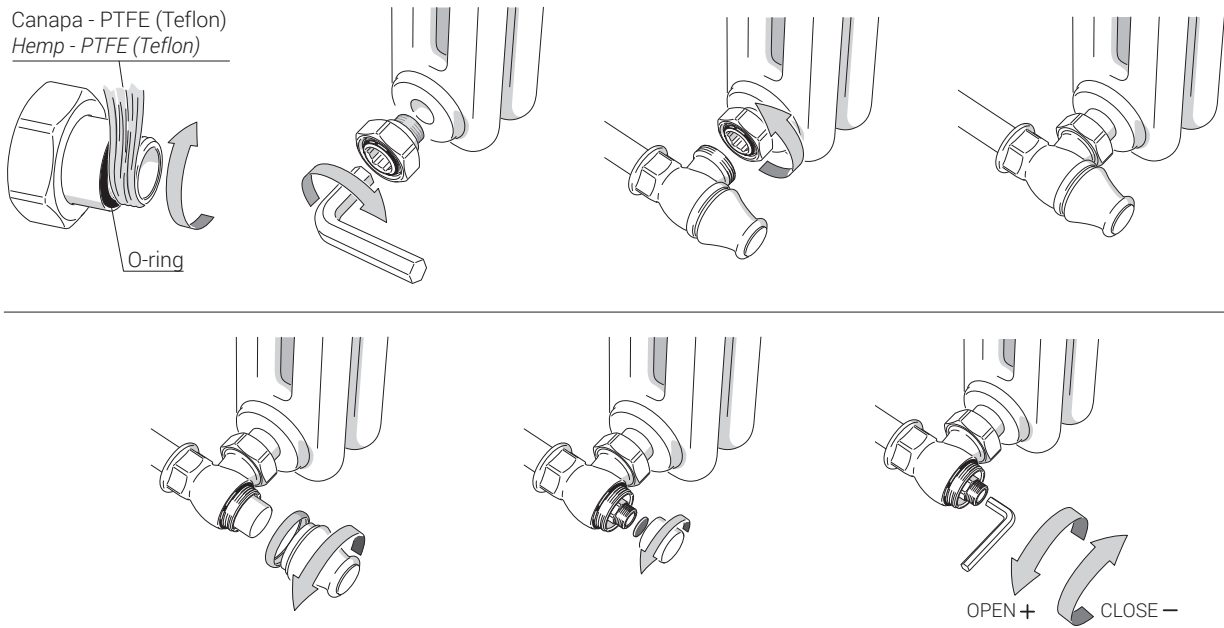
Art. 0325 - Istruzioni Instructions

Canapa - PTFE (Teflon)
Hemp - PTFE (Teflon)



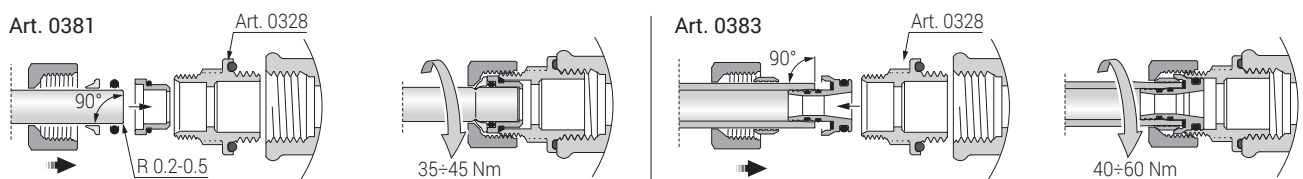
Art. 0323 - Istruzioni Instructions

Canapa - PTFE (Teflon)
Hemp - PTFE (Teflon)



Installazione raccordi Connection installation

Per versione tubo rame e multistrato acquistare art. 0328
For copper and multilayer connection buy ref. 0328





0328

Adattatore per tubo rame e multistrato.

Adaptor for copper and multilayer tubes.



0322

Tappo per radiatore.

Radiator cap.



0327

Valvolina sfogo aria manuale in ottone.

Brass manual air-vent valve.



0030

Eccentrico per radiatori.

Cam for radiators.



0381

Raccordo per tubo rame a tenuta O-Ring.

Copper tube connection with O-ring seal.



0383

Raccordo per tubo multistrato.

Multilayer tube connection.



0490

Rosetta

Wall plate



0031

Raccordo 1/2" con tubo saldato \varnothing 15 mm.

1/2" connection with welded pipe \varnothing 15 mm.



0491

Kit copritubo tondo (2 pezzi).

Round pipe cover set (2 pcs).



0497

Kit copritubo tondo floreale (2 pezzi).

Round floral pipe cover set (2 pcs).



A491

Kit di collegamento con rosoni tondi (2 pezzi), \varnothing 15 mm, lunghezza 150 mm x 1/2".

Round connection set (2 pcs), \varnothing 15 mm, length 150 mm x 1/2"



A497

Kit di collegamento tondo floreale (2 pezzi), \varnothing 15 mm, lunghezza 150 mm x 1/2".

Round floral connection set (2 pcs), \varnothing 15 mm, length 150 mm x 1/2"