




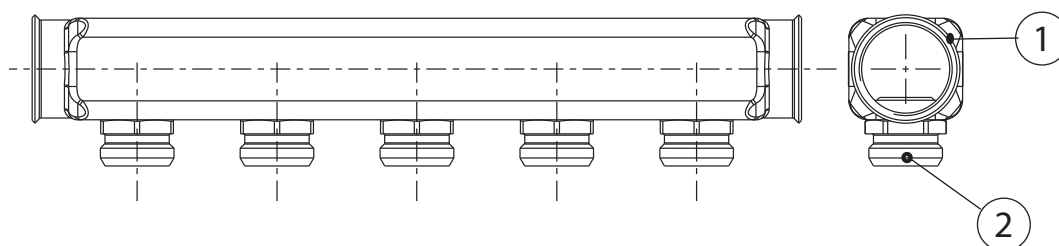
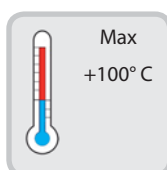


-  Collettore in acciaio inox AISI 304 1" - 1"1/4.
Attacchi M 3/4" EK.
-  AISI 304 stainless steel manifold 1" - 1"1/4.
M 3/4" Eurocone connections.
-  Verteiler aus rostfreiem Edelstahl AISI 304 mit 1" - 1" 1/4, 3/4".
AG 3/4" Anschlüsse EK.
-  Collecteur en acier inox AISI 304 1" - 1"1/4.
Fixations M 3/4" EK.
-  Коллектор из нержавеющей стали AISI 304, размеры 1" - 1"1/4.
Соединения Н 3/4" Евроконус.

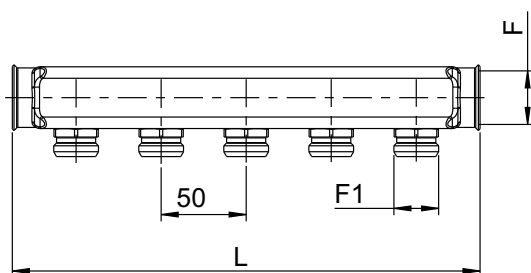


N	DENOMINAZIONE PART NAME	MATERIALE MATERIAL	TRATTAMENTO TREATMENT
1	Collettore Manifold	Acciaio inox AISI 304 Stainless steel AISI 304	
2	Attacchi M 3/4" EK M 3/4" Eurocone connections	Ottone - Brass CW 614N - UNI EN 2164/98	Nichelato Nickel plated



Dati tecnici - Technical data

Pressione massima di esercizio
Max. working pressure 10 bar



Code	Tippe	F	F1	L
187111502	2 vie	G 1"	3/4"	125
187111503	3 vie	G 1"	3/4"	175
187111504	4 vie	G 1"	3/4"	225
187111505	5 vie	G 1"	3/4"	275
187111506	6 vie	G 1"	3/4"	325
187111507	7 vie	G 1"	3/4"	375
187111508	8 vie	G 1"	3/4"	425
187111509	9 vie	G 1"	3/4"	475
187111510	10 vie	G 1"	3/4"	525
187111511	11 vie	G 1"	3/4"	575
187111512	12 vie	G 1"	3/4"	625
187111513	13 vie	G 1"	3/4"	675
187113506	6 vie	G 1"1/4	3/4"	325
187113507	7 vie	G 1"1/4	3/4"	375
187113508	8 vie	G 1"1/4	3/4"	425
187113509	9 vie	G 1"1/4	3/4"	475
187113510	10 vie	G 1"1/4	3/4"	525
187113511	11 vie	G 1"1/4	3/4"	575
187113512	12 vie	G 1"1/4	3/4"	625
187113513	13 vie	G 1"1/4	3/4"	675