




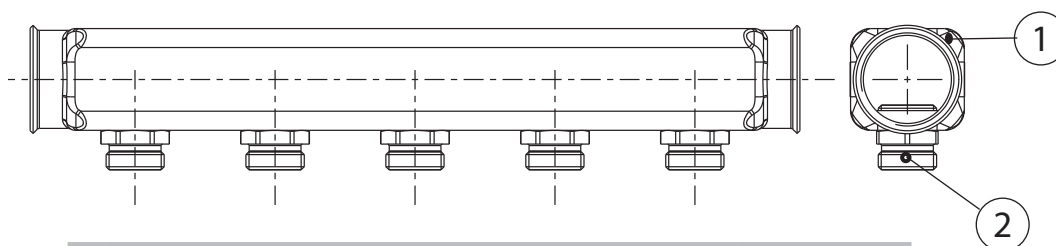
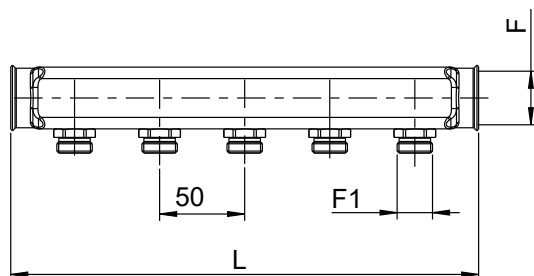
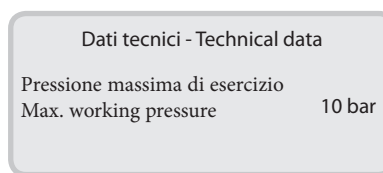
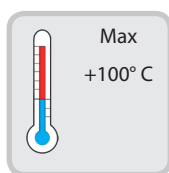


-  Collettore in acciaio inox AISI 304 1" - 1"1/4.  
Attacchi M 1/2".
-  AISI 304 stainless steel manifold 1" - 1"1/4.  
M 1/2" connections.
-  Verteiler aus rostfreiem Edelstahl AISI 304 mit 1" - 1" 1/4.  
anschlüsse AG mit Außengewinde 1/2".
-  Collecteur en acier inox AISI 304 1" - 1"1/4.  
Fixations M 1/2".
-  Коллектор из нержавеющей стали AISI 304, размеры 1" - 1"1/4'.  
Соединения Н 1/2".



N	DENOMINAZIONE PART NAME	MATERIALE MATERIAL	TRATTAMENTO TREATMENT
1	Collettore Manifold	Acciaio inox AISI 304 Stainless steel AISI 304	
2	Attacchi M 1/2" M 1/2" Connections	Ottone - Brass CW 614N - UNI EN 2164/98	Nichelato Nikel plated



Code	Tippe	F	F1	L
186811502	2 vie	G 1"	1/2"	125
186811503	3 vie	G 1"	1/2"	175
186811504	4 vie	G 1"	1/2"	225
186811505	5 vie	G 1"	1/2"	255
186811506	6 vie	G 1"	1/2"	325
186811507	7 vie	G 1"	1/2"	355
186811508	8 vie	G 1"	1/2"	425
186811509	9 vie	G 1"	1/2"	475
186811510	10 vie	G 1"	1/2"	525
186811511	11 vie	G 1"	1/2"	575
186811512	12 vie	G 1"	1/2"	625
186811513	13 vie	G 1"	1/2"	675
186832506	6 vie	G 1"1/4	1/2"	325
186832507	7 vie	G 1"1/4	1/2"	375
186832508	8 vie	G 1"1/4	1/2"	425
186832509	9 vie	G 1"1/4	1/2"	475
186832510	10 vie	G 1"1/4	1/2"	525
186832511	11 vie	G 1"1/4	1/2"	575
186832512	12 vie	G 1"1/4	1/2"	625
186832513	13 vie	G 1"1/4	1/2"	675