






# IVR 806 NEW AVANT FLOOR



-  Collettore di mandata con misuratori di portata; collettore di ritorno con valvole manuali e volantini manuali.
-  Inlet manifold with flow meter; return manifold with manual valves and manual handles.
-  Vorlaufverteiler mit Durchflussmessern; Rücklaufverteiler mit Regulierventilen, Handrädern.
-  Collecteur d'alimentation avec débitmètres des circuits; collecteur de retour avec vannes manuelles.
-  Входной коллектор с расходомерами; Обратный коллектор с ручными регулирующими клапанами.



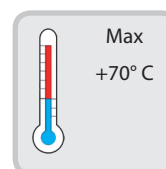
Collettore in acciaio inox AISI 304 1" - 1"1/4, connessioni 3/4" EK interasse 50 mm, zanche di fissaggio antivibrazione, etichette e istruzioni.

AISI 304 stainless steel manifold 1" - 1"1/4, 3/4" Eurocone connections centre hole distance 50 mm, mounting brackets which minimise noise and vibration, stickers and assembly instruction.

Verteiler aus rostfreiem Edelstahl AISI 304 mit 1" - 1" 1/4, 3/4" anschlüssen Eurokonus abstand 50 mm, schwingungsdämpfenden Befestigungsklammern, etiketten und anweisungen.

Collecteur en acier inox AISI 304 1" - 1"1/4, fixations 3/4" EK entraxes 50 mm, plaques d'ancrage antivibration, étiquettes et instructions.

Коллектор из нержавеющей стали AISI 304, размеры 1" - 1"1/4, 3/4" соединения Евроконус межосевое расстояние 50 мм, крепления с защитой от вибрации, инструкция по сборке.



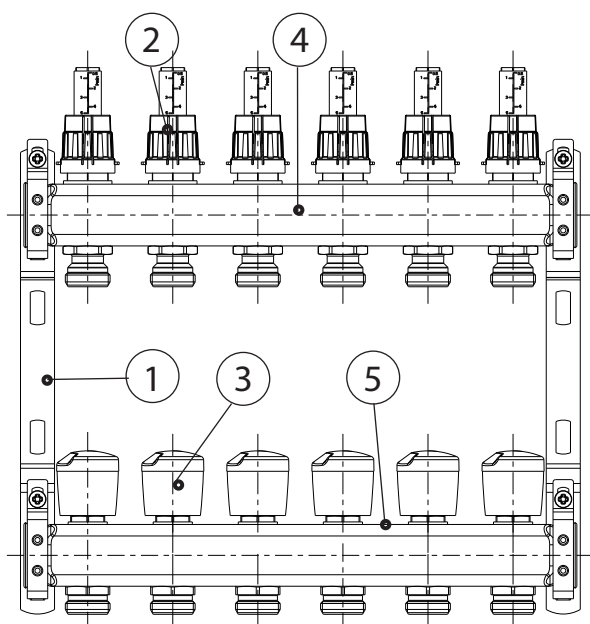
Max  
+70° C



ISO 228-1

#### Dati tecnici - Technical data

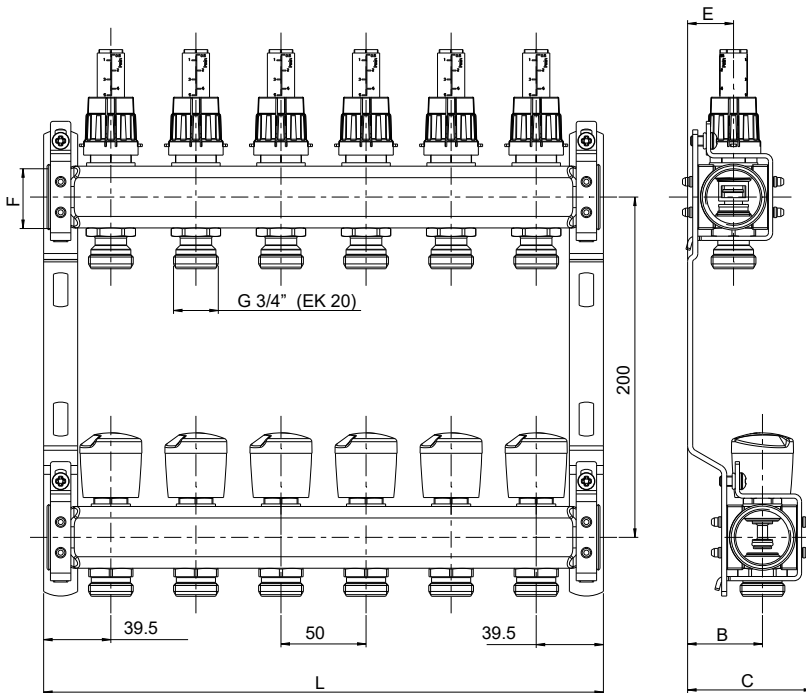
Pressione massima di esercizio  
Max. working pressure 10 bar



N	DENOMINAZIONE PART NAME	MATERIALE MATERIAL	TRATTAMENTO TREATMENT
1	Zanca Acciaio Mounting brackets	Acciaio Steel	Zincata Zinc plated
2	Misuratore di portata Flow setting valve	ABS	
3	Valvola manuale Manual valve		
4	Collettore con misuratore di portata Manifold with flow setting valve	Acciaio inox AISI 304 Stainless steel AISI 304	
5	Collettore con valvole Manifold with valves	Acciaio inox AISI 304 Stainless steel AISI 304	

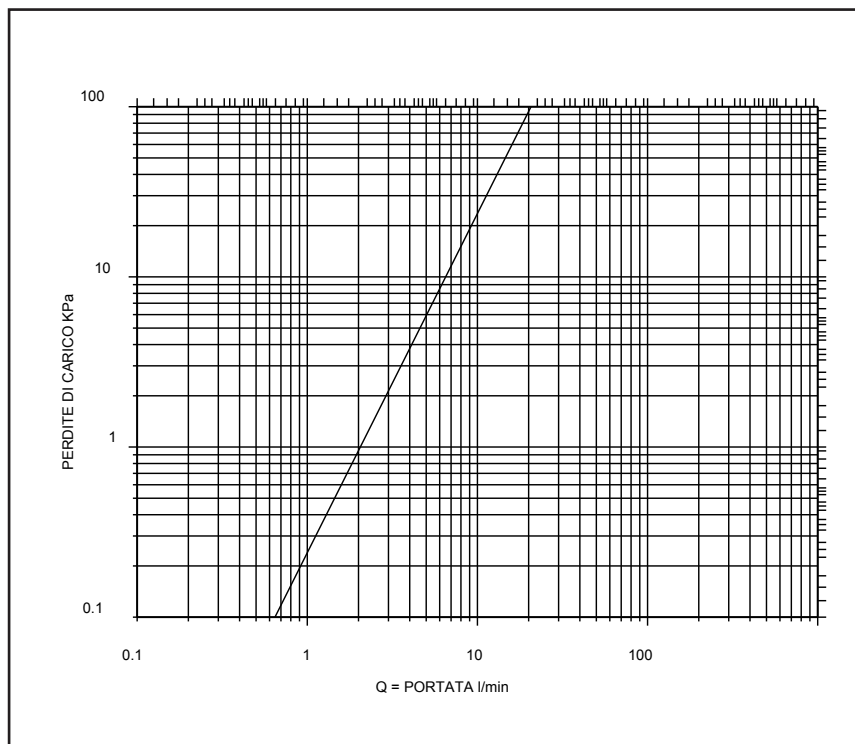
Ed.10/16

Tutte le caratteristiche tecniche dei prodotti sono soggette a modifiche senza preavviso - All product's technical specifications are subject to modification without prior notice



Code	Tipe	F	L	B	C	E
180522502	2 vie	G 1"	129	44	73.5	27
180522503	3 vie	G 1"	179	44	73.5	27
180522504	4 vie	G 1"	229	44	73.5	27
180522505	5 vie	G 1"	279	44	73.5	27
180522506	6 vie	G 1"	329	44	73.5	27
180522507	7 vie	G 1"	379	44	73.5	27
180522508	8 vie	G 1"	429	44	73.5	27
180522509	9 vie	G 1"	479	44	73.5	27
180522510	10 vie	G 1"	529	44	73.5	27
180522511	11 vie	G 1"	579	44	73.5	27
180522512	12 vie	G 1"	629	44	73.5	27
180532506	6 vie	G 1"1/4	329	46.5	79.5	29.5
180532507	7 vie	G 1"1/4	379	46.5	79.5	29.5
180532508	8 vie	G 1"1/4	429	46.5	79.5	29.5
180532509	9 vie	G 1"1/4	479	46.5	79.5	29.5
180532510	10 vie	G 1"1/4	529	46.5	79.5	29.5
180532511	11 vie	G 1"1/4	579	46.5	79.5	29.5
180532512	12 vie	G 1"1/4	629	46.5	79.5	29.5

## DIAGRAMMA PERDITE DI CARICO FLOW AND PRESSURE DROP



KVs 1.240 m<sup>3</sup>/h